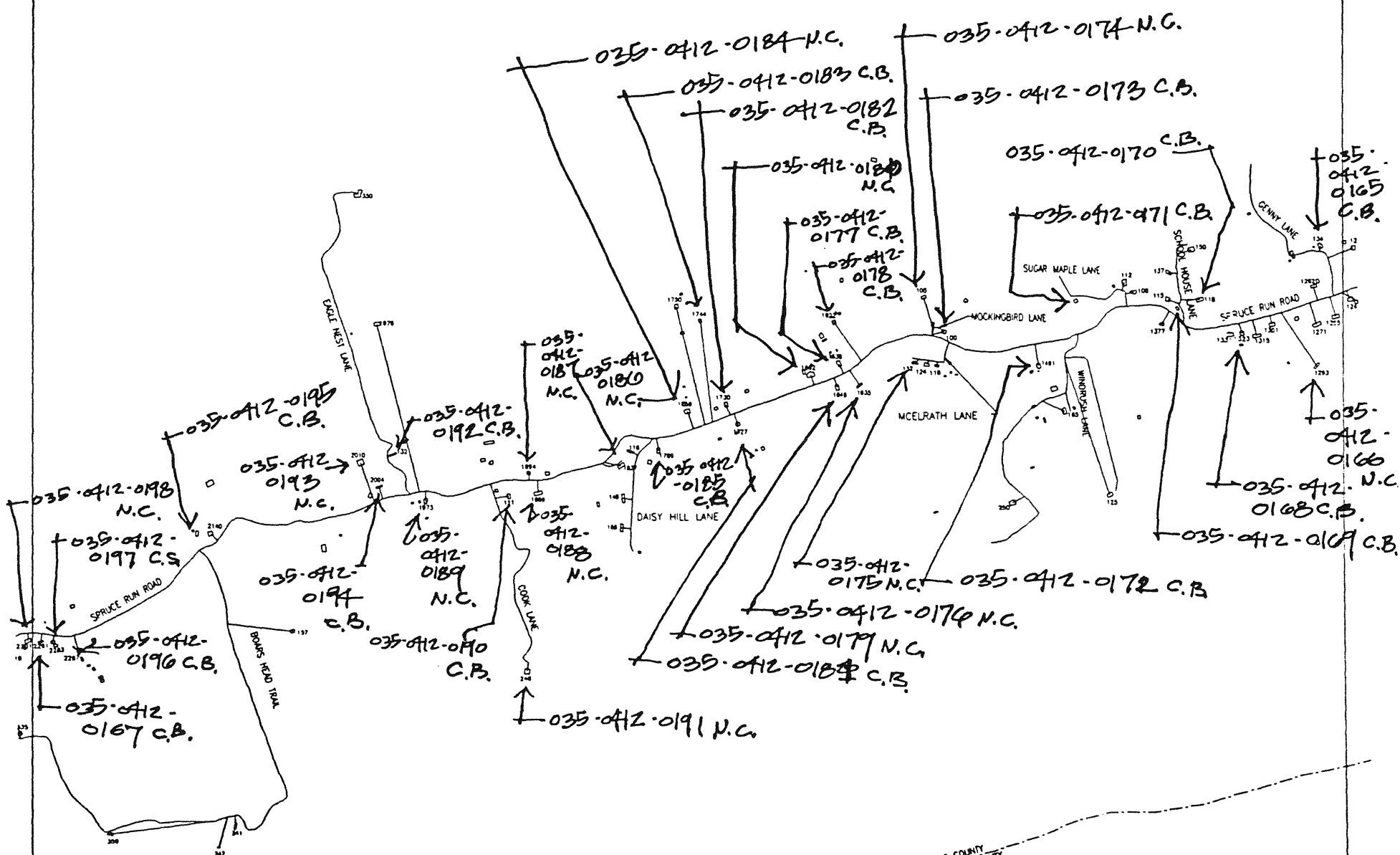


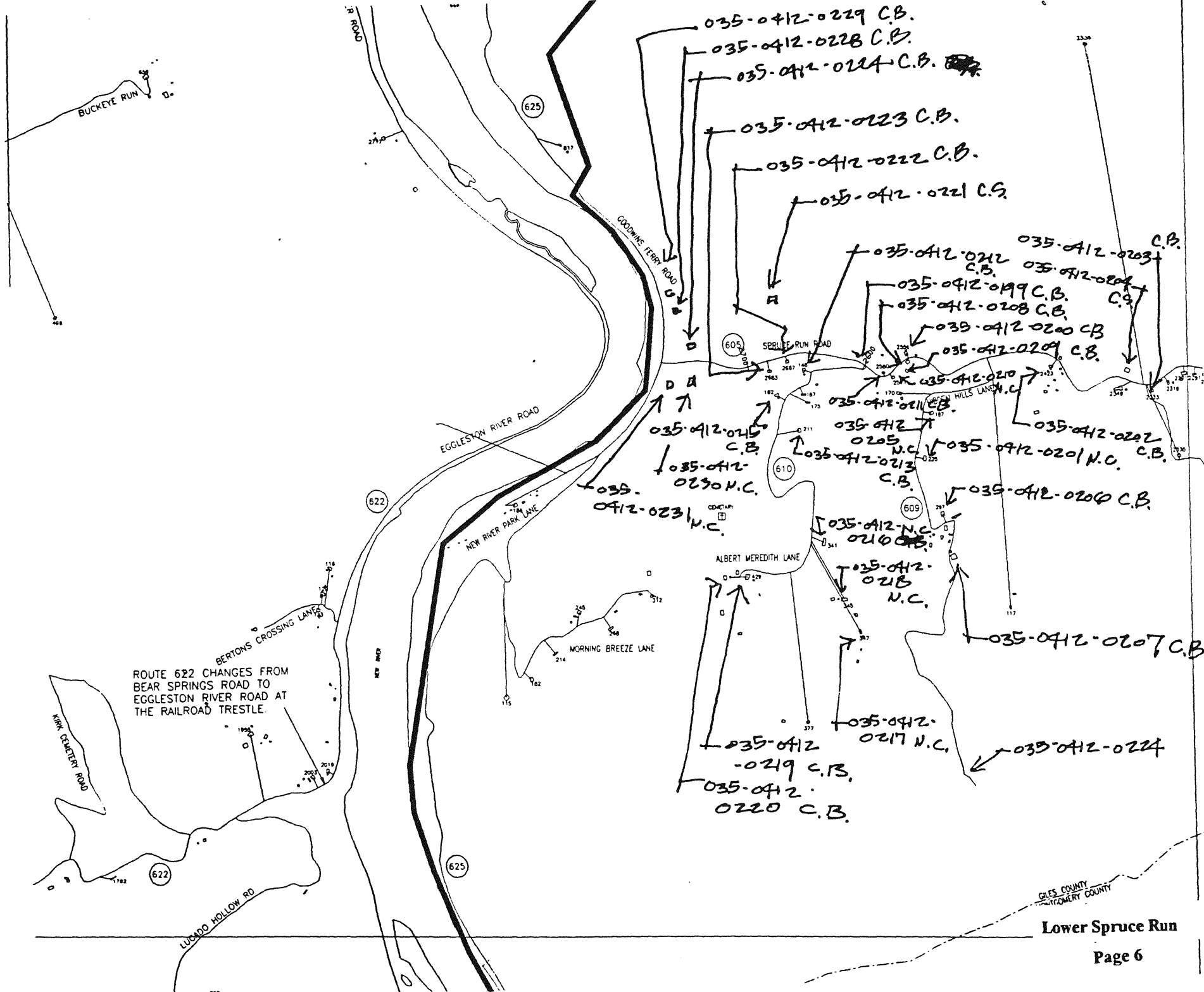
ES COUNTY
 CLATSOP COUNTY
 WASHINGTON COUNTY

Upper Spruce Run



GLASS COUNTY
MONTGOMERY COUNTY

Middle Spruce Run



ROUTE 622 CHANGES FROM BEAR SPRINGS ROAD TO EGGLESTON RIVER ROAD AT THE RAILROAD TRESTLE.

035-0412-0229 C.B.
 035-0412-0228 C.B.
 035-0412-0224 C.B.

035-0412-0223 C.B.
 035-0412-0222 C.B.
 035-0412-0221 C.S.

035-0412-0212 C.B.
 035-0412-0209 C.B.
 035-0412-0208 C.B.
 035-0412-0200 C.B.
 035-0412-0209 C.B.

035-0412-0245 C.B.
 035-0412-0230 N.C.
 035-0412-0231 N.C.

035-0412-0211 C.B.
 035-0412-0205 N.C.
 035-0412-0213 C.B.
 035-0412-0202 C.B.
 035-0412-0201 N.C.

035-0412-0210 C.B.
 035-0412-0218 N.C.

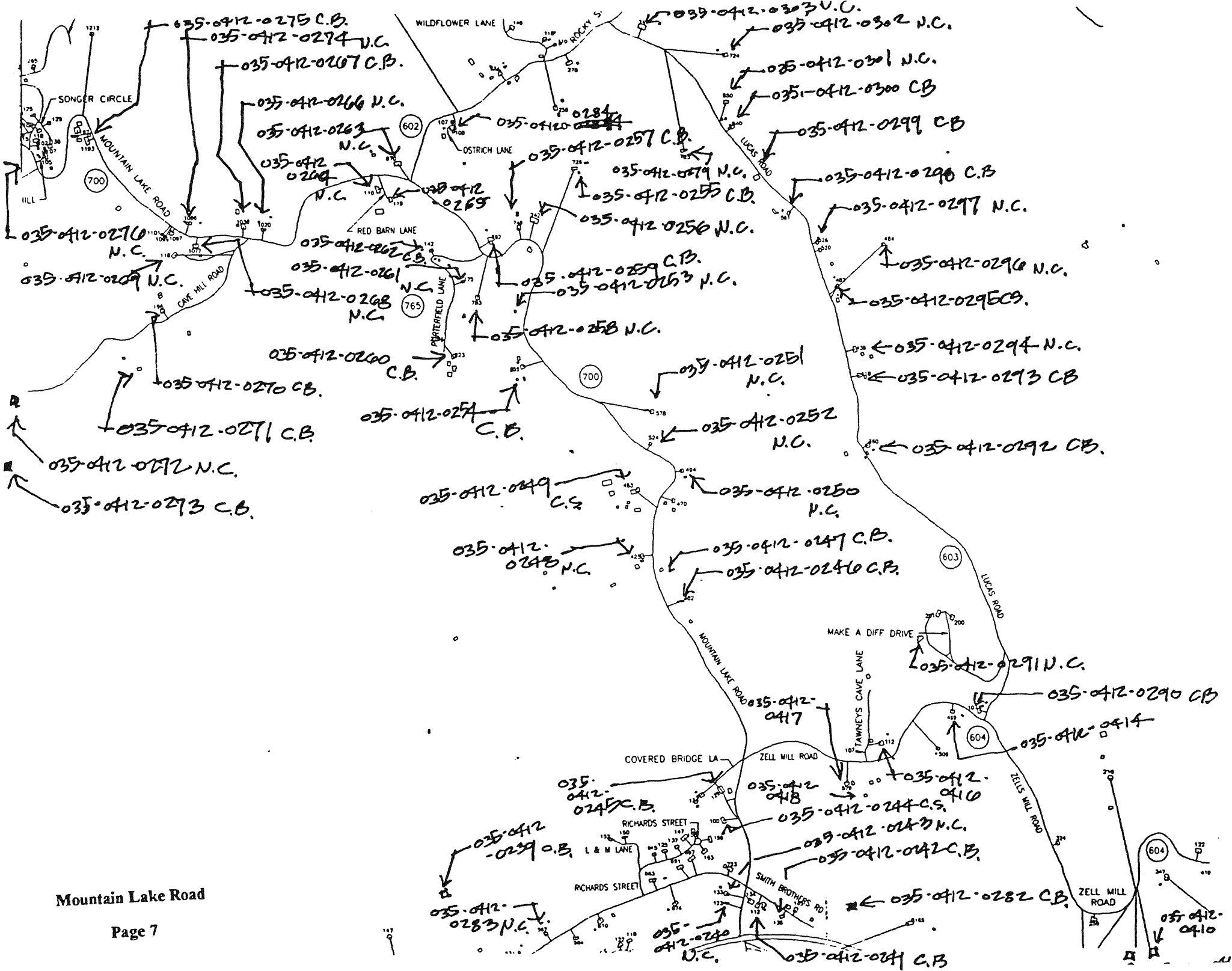
035-0412-0207 C.B.

035-0412-0217 N.C.
 035-0412-0219 C.B.
 035-0412-0220 C.B.

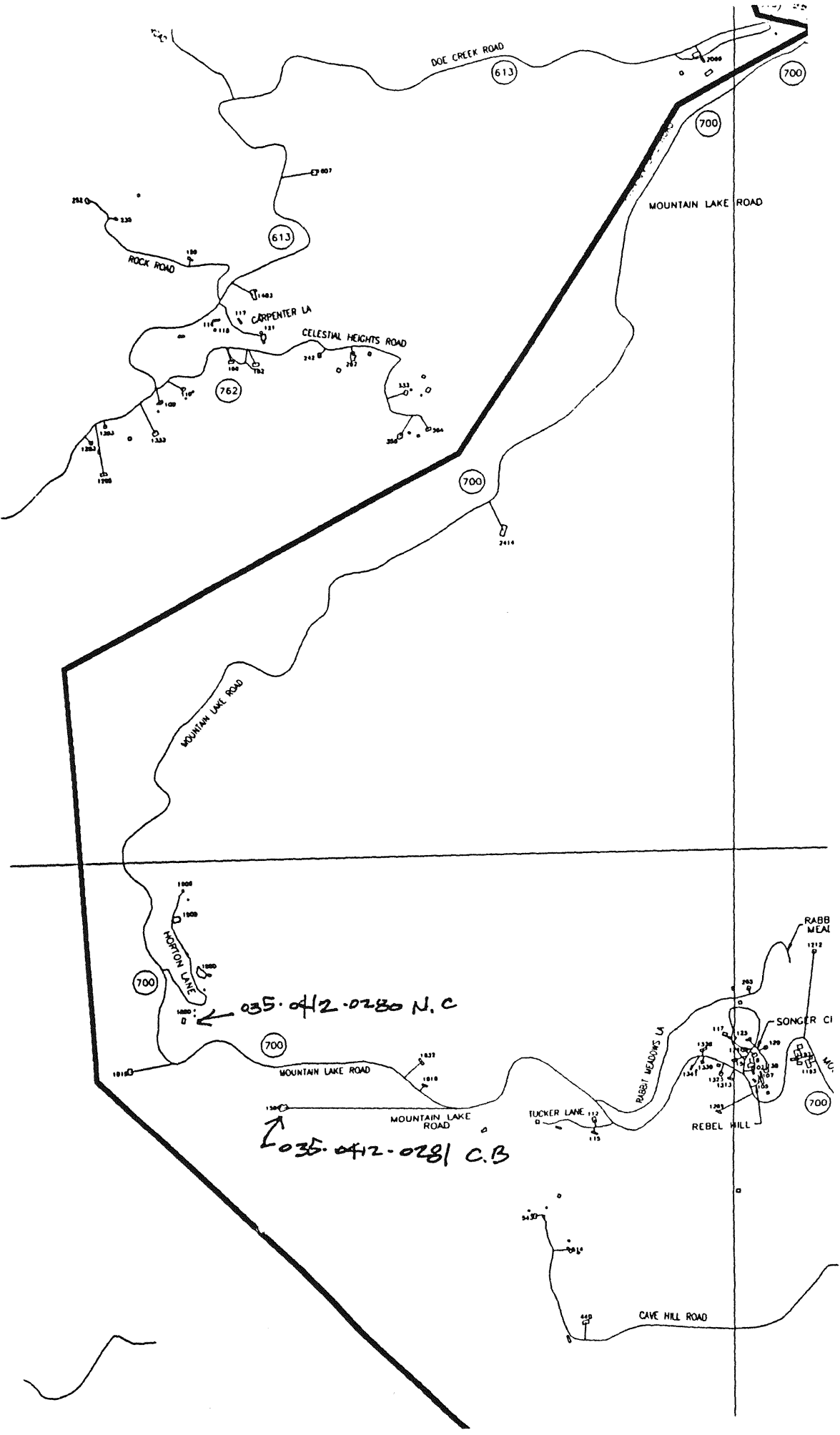
035-0412-0224

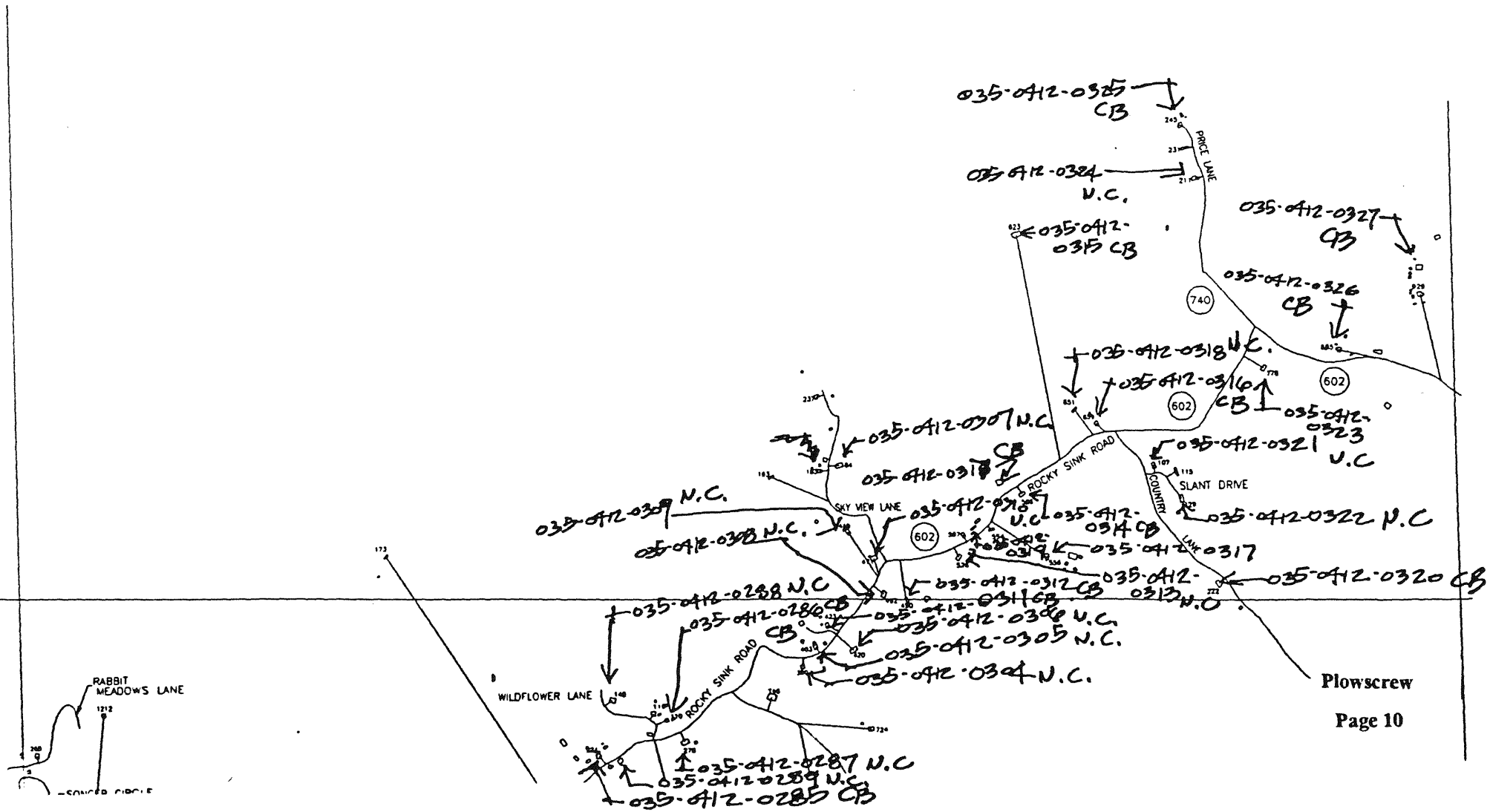
GLAS COUNTY
 WITCOMB COUNTY

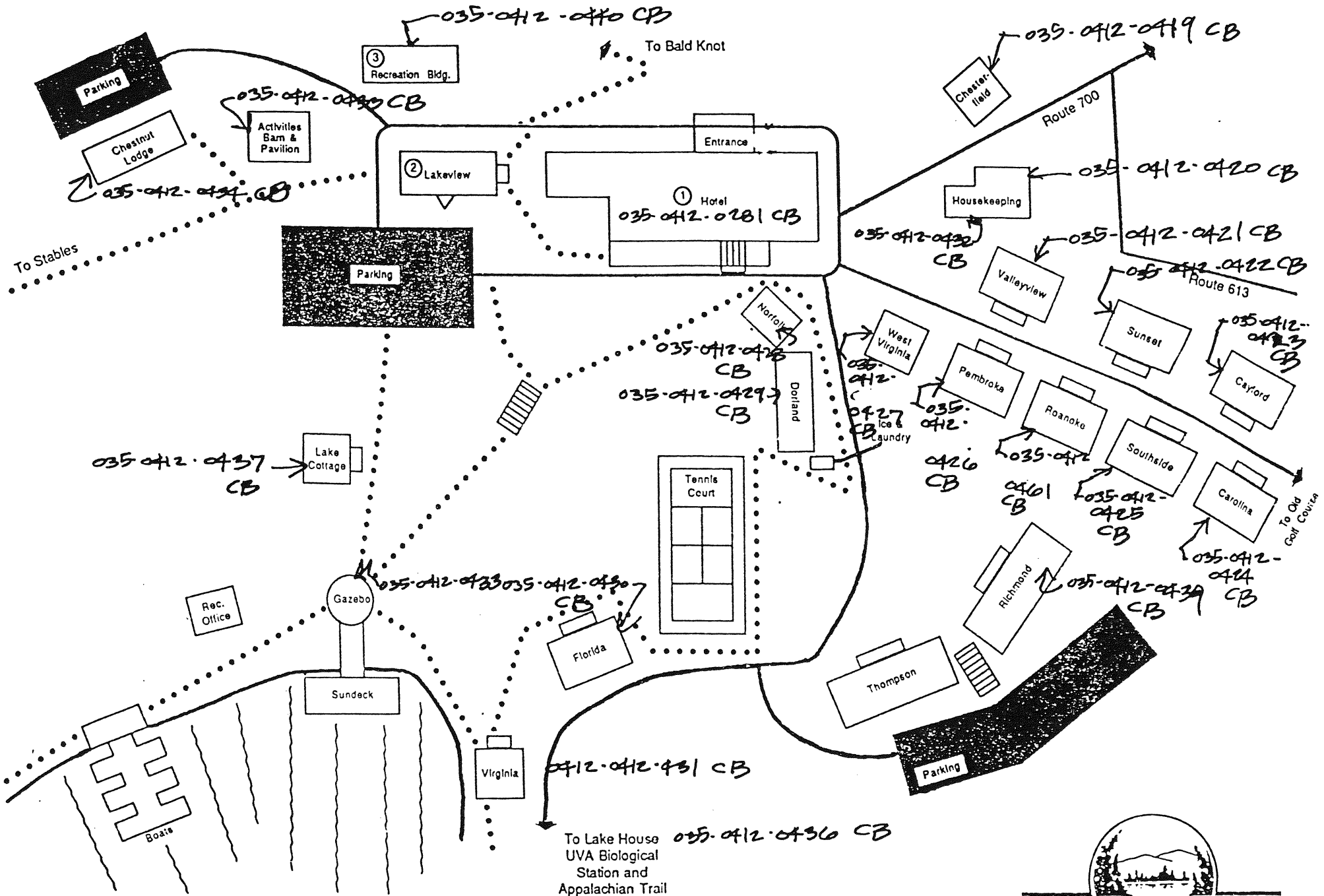
Lower Spruce Run



Mountain Lake Road







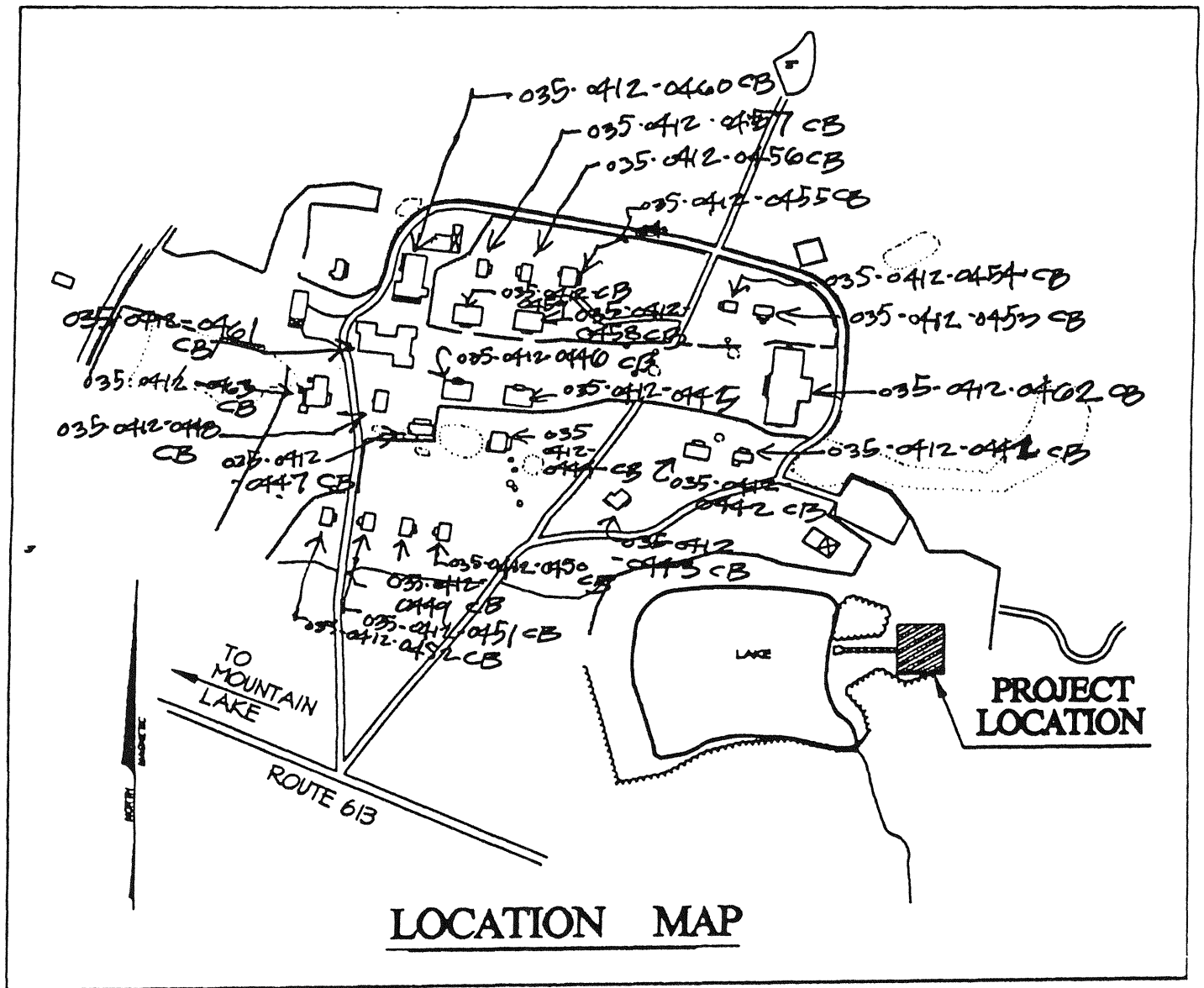
- ① Hotel-Main Level
Registration/Guest Services
Dining Room
Library Reading Room
Pee Toots Lounge

- Hotel-Lower Level
Executive Offices
Banquet/Meeting Facilities
- Hotel-Upper Level
Television Room
Card Room

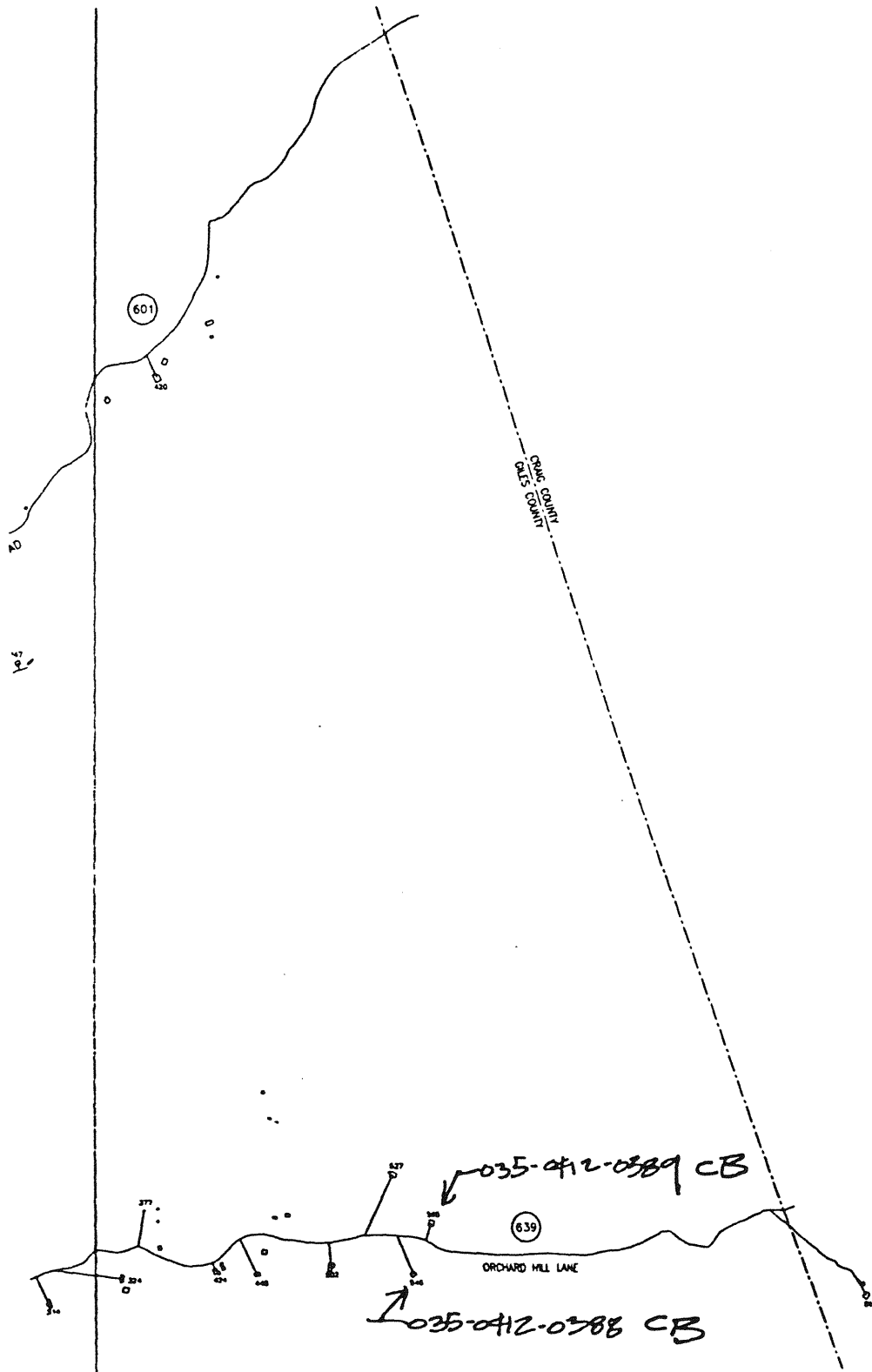
- ② Lakeview Cottage
MKW Arts & Antiques
The Gallery
The General Store
Wilderness Conservancy Museum
Wilderness Conservancy Office

- ③ Recreation Building
Game Room
Kiddie Room (Wilderness Camp)





LOCATION MAP



Clover Hollow